

Word Alignment System Based on Hybrid Approach for Myanmar-English Machine Translation

Khin Thandar Nwet¹, Khin Mar Soe² and Ni Lar Thein³

¹University of Computer Studies, Yangon, Myanmar

(Tel : +95-0973176035; E-mail: khin.thandarnwet@gmail.com)

³University of Computer Studies, Yangon, Myanmar

(E-mail: nilarthein@gmail.com)

Abstract: Word alignment is a basic and critical process in the Statistical Machine Translation (SMT). Word alignment is to identify word correspondence that are translations of each other based on information found on parallel text. Essential for building parallel corpora is the alignment of translated segments with source segments. A parallel corpus is a collection of texts in two languages, one of which is the translation equivalent of the other. Nowadays, Myanmar-English word-aligned parallel corpora are not available. This paper describes the construction of an aligned Myanmar-English parallel corpus to be able to use as a resource in Myanmar-English machine translation. The proposed system uses the combination of corpus-based approach and the dictionary lookup approach. The corpus-based approach is based on the first three IBM models and Expectation Maximization (EM) algorithm. For the dictionary lookup approach, the proposed system uses the bilingual Myanmar-English Dictionary. The system also uses a list of cognates and morphological analysis to get better alignment accuracy. Accuracy of modern statistical machine translation depends on good word alignment.

Keywords: Word Alignment, IBM Models, Word-aligned Parallel Corpus

1. INTRODUCTION

Myanmar language is considerable more difficult than for Western Languages[12]. Bilingual word alignment is the first step of most current approaches to Statistical Machine Translation or SMT [1]. One simple and very old but still quite useful approach for language modeling is n-gram modeling. Separate language models are built for the source language (SL) and the target language (TL). For this stage, monolingual corpora of the SL and the TL are required. The second stage is called translation modeling and it includes the step of finding the word alignments induced over a sentence aligned bilingual (parallel) corpus. This paper deals with the step of word alignment.

Corpora and other lexical resources are not yet widely available in Myanmar. Research in language technologies has therefore not progressed much. In this paper we describe our efforts in building an English-Myanmar aligned parallel corpus. A parallel corpus is a collection of texts in two languages, one of which is the translation equivalent of the other. Although parallel corpora are very useful resources for many natural languages processing applications such as building machine translation systems, multilingual dictionaries and word sense disambiguation, they are not yet available for many languages of the world.

Building a parallel corpus manually is a very tedious and time consuming task. A good way to develop such a corpus is to start from available resources containing the translations from the source language to the target language. A parallel corpus becomes very useful when the texts in the two languages are aligned. This system used the IBM models to align the texts at word level.

Many words in natural languages have multiple meanings. It is important to identify the correct sense

of a word before we take up translation, query-based information retrieval, information extraction, question answering, etc. Recently, parallel corpora are being employed for detecting the correct sense of a word. Ng [7] proposed that if two languages are not closely related, different senses in the source language are likely to be translated differently in the target language. Parallel corpus based techniques for word sense disambiguation therefore work better when the two languages are dissimilar.

The paper is structured as follows. Section 2 describes some related work. Overview of statistical machine translation for Myanmar to English is presented in section 3. Section 4, discuss about IBM alignment models. In section 5, we describe hybrid approach for proposed alignment model. Mining of Verb and Noun Affixes is presented in section 6. The proposed System is discussed in section 7. In section 8, we present experimental results. Finally, section 9 presents conclusion.

2. RELATED WORK

A vast amount of research has been conducted in the alignment of parallel texts with various methodologies. G. Chinnappa and Anil Kumar Singh [5] proposed a java implementation of an extended word alignment algorithm based on the IBM models. They have been able to improve the performance by introducing a similarity measure (Dice coefficient), using a list of cognates and morph analyzer. Li and Chengqing Zong [11] addressed the word alignment between sentences with different valid word orders, which changes the order of the word sequences (called word reordering) of the output hypotheses to make the word order more exactly match the alignment reference.

K-vec algorithm [13] makes use of the word position and frequency feature to find word correspondences

using Euclidean distance. Ittycheriah and Roukos [8] proposed a maximum entropy word aligner for Arabic-English machine translation. Martin et al. [9] have discussed word alignment for languages with scarce resources. R. Harshawardhan, Mridula Sara Augustine and Dr K. P. Soman [17] proposed a simplified approach to word alignment algorithm for English-Tamil translation. The word alignment problem is viewed as a simple assignment problem and is formulated as an Integer Linear Programming problem. Jamie Brunning, Adria de Gispert and William Byrne proposed Context-Dependent alignment models for statistical machine translation [10]. These models lead to an improvement in alignment quality, and an increase in translation quality when the alignments are used in Arabic-English and Chinese-English translation.

Most current SMT systems [14] use a generative model for word alignment such as the one implemented in the freely available tool GIZA++ [16]. GIZA++ is an implementation of the IBM alignment models [15]. These models treat word alignment as a hidden process, and maximize the probability of the observed (e, f) sentence pairs using the Expectation Maximization (EM) algorithm, where e and f are the source and the target sentences. In [3] all the conducted experiments prove that the augmented approach, on multiple corpuses, performs better when compared to the use of GIZA++ and NATools individually for the task of English-Hindi word alignment. D.Wu, (1994) [2] has developed Chinese and English parallel corpora in the Department of Computer Science and University of Science and Technology in Clear Water Bay, Hong Kong. Here two methods are applied which are important once. Firstly, the gale's methods is used to Chinese and English which shows that length-based methods give satisfactory result even between unrelated languages which is a surprising result. Next, it shows the effect of adding lexical cues to a length-based methods. According to these results, using lexical information increases accuracy of alignment from 86% to 92%.

3. OVERVIEW OF THE STATISTICAL MACHINE TRANSLATION OF MYANMAR TO ENGLISH

Fig. 1 shows overview architecture of the statistical machine translation of Myanmar to English. The source language model includes Part-of-Speech (POS) tagging and finding grammatical relations. The translation model includes phrase extraction, translation by using bilingual Myanmar to English corpus. The translation model also interacts with WSD (Word Sense Disambiguation) to solve ambiguities when a phrase has with more than one sense. The target language model includes reordering the translated English sentence and smoothing it by reducing grammar errors. In this Myanmar to English machine translation system, we focus on Alignment model. The main goal is to construct Myanmar-English word-aligned parallel corpus. Alignment model is central components of any

statistical machine translation system. The result corpus will be used in most parts of the Myanmar-English machine translation.

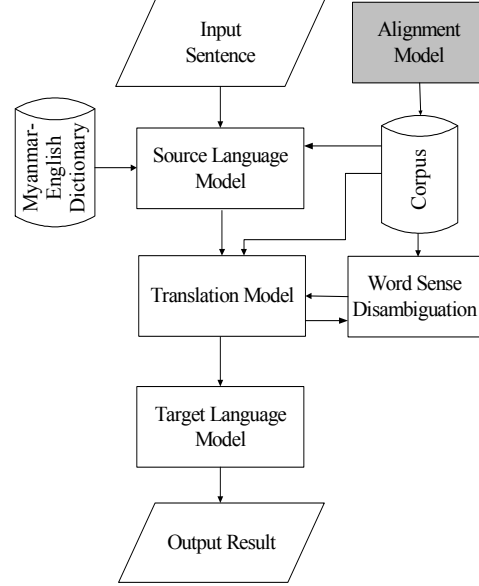


Fig. 1 Machine Translation System of Myanmar-English

4. ALIGNMENT MODEL

Alignment is a central issue in the construction and exploitation of parallel corpora. One of the central modeling problems in statistical machine translation (SMT) is alignment between parallel texts. The duty of alignment methodology is to identify translation equivalence between sentences, words and phrases within sentences. In most literature, alignment methods are categorized as either association approaches or estimation approaches (also called heuristic models and statistical models). Association approaches use string similarity measures, word order heuristics, or co-occurrence measures (e.g. mutual information scores).

The central distinction between statistical and heuristic approaches is that statistical approaches are based on well-founded probabilistic models while heuristic ones are not. Estimation approaches use probabilities estimated from parallel corpora, inspired from statistical machine translation, where the computation of word alignments is part of the computation of the translation model.

4.1 The IBM Alignment Models 1 through 3

In their systematic review of statistical alignment models (Och and Ney, 2003[4]), Och and Ney describe the essence of statistical alignment as trying to model the probabilistic relationship between the source language string m , and target language string e , and the alignment a between positions in m and e . The mathematical notations commonly used for statistical alignment models follow.

$$\begin{matrix} m_1^j = m_1, \dots, m_j, \dots, m_T \\ e_1^i = e_1, \dots, e_i, \dots, e_I \end{matrix} \quad (1)$$

lookup approach. The following sections explain each approach.

5.1 Corpus Based Approach

The corpus based approach is based on the first three IBM models and Expectation Maximization (EM) algorithm. The Expectation-Maximization (EM) algorithm is used to iteratively estimate alignment model probabilities according to the likelihood of the model on a parallel corpus. In the Expectation step, alignment probabilities are computed from the model parameters and in the Maximization step, parameter values are re-estimated based on the alignment probabilities and the corpus. The iterative process is started by initializing parameter values with uniform probabilities for IBM Model 1. The EM algorithm is only guaranteed to find a local maximum which makes the result depend on the starting point of the estimation process. This system is implemented EM algorithm and deals with problem statements. The iterative EM algorithm corresponding to the translation problem can be described as:

Step-1: Collect all word types from the source and target corpora. For each source word m collect all target words e that co-occurs at least once with m .

Step-2: Initialize the translation parameter uniformly (uniform probability distribution), i.e., any target word probably can be the translation of a source word e . In this step, there are two main tasks for aligning the source and target sentences. The detail algorithm of each task is shown Fig.2 and Fig. 3. The first task is pre-processing and the second task is the usage of the first three IBM models.

Pre-processing Phase

```

Accept Source Sentence;
Accept Target Sentence;
Remove Stop Word in Source Words (S) eg: သည်, နှင့်
For each Source Sentence S do
    Separate into words;
    Store Source Words Indexes;
End For
For each Target Sentence T do
    Separate into words;
    Store Target Words Indexes;
End For
    
```

Fig. 2 Algorithm for Pre-processing

Step-1: Collect all word types from the source and target corpora.

For each source word m collect all target words e that co occurs at least once with m .

Step-2: Any target word (e) probably can be the translation of a source word (m) and the lengths of the source and target sentences are s and t , respectively.

Initialize the expected translation count T_c and Total to 0

Step-3: Iteratively refine the translation probabilities.
 For $i=1$ to s do
 Source Words with N-grams Method

```

Select Target Words FROM Bilingual corpus
WHERE Similar Source word  $m_i$ 
total+=T( $m_i$ ) in corpus
For  $j=1$  to  $t$  do
    If  $e_j$  equals to Target Word in Corpus
         $T_c(e_j|m_i)+= T(e_j|m_i)$ 
        Store Source Word Index and Target
        Word Index
        Align Source Word and Target Word
        and Store in Corpus
    Else if
        Use the English Pattern (combine English
        words with N-grams method) and Myanmar
        morphological analysis
        If T ( $m_i$ ) equals to Target Word in Corpus
             $T_c(e_j|m_i)+= T(e_j|m_i)$ 
            Store Source Word Index and Target
            Word Index
            Align Source Word and Target Word
            and Store in Corpus
        Else English Word with Null insertion
        End If
    End For
    Calculate Probability T
End For
    
```

Fig. 3 The First Three IBM Models Based Algorithm

Myanmar Word	English Word
အိမ်	house
	home
	building
ရှိသည်	is
	exist
	are
	has
	have
ပါဝင်သည်	contain
	include
	consist
ကျွန်း	island
	teak

Fig. 4 Example of Ambiguity Words

5.2 Dictionary Lookup Approach

We have used dictionary (bilingual Myanmar-English dictionary) which consists of 10,000 word to word translations. The dictionary lookup approach algorithm for alignment is as below:

```

Let  $M_E$  be the set of English Meanings based on
Myanmar word and its POS.
For each Myanmar word
    Begin
        Find  $M_E$  in Myanmar-English Dictionary
        If  $|M_E|>1$  then
            Match each meaning in  $M_E$  with the input
            English word
    
```

```

If the matching is found then
Align these two words and
Store these two words in corpus
End if
End if
End

```

Fig. 5 Dictionary Lookup Algorithm

Both approaches can make alignment based on the exact match of two words. Sometimes, the words can be in varying morphological forms. Thus, the proposed approach considers to use morphological analysis to improve alignment.

6. MINING OF VERB AND NOUN AFFIXES

Unlike European languages, most of the Myanmar languages are morphologically rich and have the feature of compounding, thereby making the problem different in terms of SMT. For better word alignment of text in Myanmar languages, information about Morphological analysis is certainly needed. Affixes mining is the important task of morphological analyzer in NLP application such as same stem decision translate from one language to the cross-language, classify the word type from any language etc. In English, if we have the words governed, governing, government, governor, governs, and govern in that corpus, **govern** is (stem) verb and affixes are **ing, s, ment**, or but all affixes are not verb affixes. Because if **govern** and **ment** are combine, government is became but is not Verb. This is Noun. Thus, every combination of verb and affixes are not verb affixes.

Having a list of salient affixes is not sufficient to parse a given word into stem and affix (es). For example, **sing** happens to end in the most salient suffix yet it is not composed of **s** and **ing** because crucially, there is no ***s, *sed** etc. Thus to parse a given word we have to look at additional evidence beyond the word itself, such as the existence of other inflections of potentially the same stem as the given word, or further, look at inflections of other stems which potentially share an affix with the given word [6].

In the same way, Myanmar language can be mined verb affixes and noun affixes from any Myanmar sentences. Noun affixes are များ, ဝေ့, eg: ငှက်များ (birds), ငှက်ဝေ့ (birds). Examples of Verb affixes are shown in Table 1.

Table 1 Mining Affixes from Various Patterns of Verb

Various Patterns of Verb	Verb affixes	English Word	English Root Word
စားသောက်	သောက်	cat	cat
စားကြသောက်	ကြသောက်	cat	cat
စားစေသောက်	စေသောက်	ate	eat
စားစေမသောက်	မသောက်	cating	eat
...စေ			

eg: In စားသောက်, စား is stem and သောက် is affix and in စားကြသောက်, စား is stem and ကြသောက် are affixes and they all are verb affixes.

7. PROPOSED ALIGNMENT MODEL

This system consists of the following steps:

- Step 1: Accept pair of Myanmar and English sentences
- Step 2: English is well-developed, and there are many freely available resources for that language. English sentence is passed to Parser and it will produced Part-of-speech tagged output and root word output.
- Step 3: Segment the words in Myanmar sentence using Myanmar Stop word list file, and remove the stop words. In this step, Myanmar sentence is morphological rich. After that, using Tri-Grams method, analysis the noun and verb affixes (morphological analysis). Each sentence is calculated backward.
- Step 4: The output from Step 2 and Step 3 are aligned based on the first three IBM models and EM algorithm using parallel corpus. The result from this step is the aligned words. The high probability words are taken to insert to Parallel Corpus.
- Step 5. After Step 4, the remaining unaligned words are aligned using Myanmar-English bilingual dictionary. The lookup approach uses Myanmar root word and English POS in the dictionary to get the English word. Parallel corpus is used as training data set and also the output of the system.

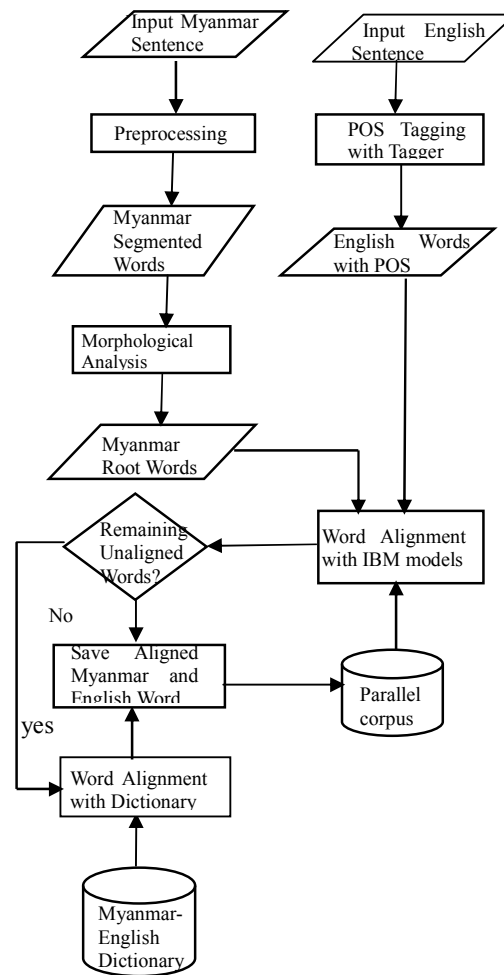


Fig. 6 Proposed Alignment System

8. EXPERIMENTS AND RESULTS

We used the Myanmar-English corpus (1000 sentence pairs). We tested only on sentences which were at least 4 words long and used Zawgyi-one Myanmar font. We report the performance of our alignment Models in terms of precision, recall and F-measure are defined as:

$$\text{Recall} = \frac{\text{Number of correctly aligned words}}{\text{Number of all words}} \times 100(\%)$$

$$\text{Precision} = \frac{\text{Number of correctly aligned words}}{\text{Number of aligned words}} \times 100(\%)$$

$$\text{F-measure} = \frac{2 \times \text{Precision} \times \text{Recall}}{\text{Precision} + \text{Recall}} \times 100(\%)$$

Experiment

Trained on: 1000 sentences

Tested on: 250 sentences

S1 is Corpus based approach

S2 is Corpus based approach + Morphological analysis

S3 is Corpus based approach + Morphological analysis

+ Bilingual Dictionary

Table 2 Results for Experiment

Experiment	S1	S2	S3
Precision (%)	80	89	95
Recall (%)	82	92	96
F-measure (%)	81	90.5	95.49

9. CONCLUSION

The main goal of word alignment is to improve statistical Myanmar-English machine translation. The second objective is to build the standard system for Myanmar-English parallel Corpus. Word alignments can have better performance on sentence-based SMT system. Since the proposed approach is based on hybrid approach, this system can generate correct alignment words. The proposed model is better result by using a list of cognates and morphological analysis. This system can be extended as phrase alignment model. However, the system used only the pure text data, and not the speech transcriptions.

In future, we will work on many to many word alignments and have to test the algorithm for large bilingual corpora.

References

[1] C. Callison-Burch, D. Talbot, and M. Osborne, "Statistical Machine Translation with Word- and Sentence-Aligned Parallel Corpora". *In Proceedings of ACL, pages 175-182*, Barcelona, Spain, July 2004.

[2] D. Wu. "Aligning a Parallel English-Chinese Corpus Statistically with Lexical Criteria" *In: Proc. of the 32nd Annual Conference of the ACL*: 80-87. Las Cruces, NM in 1994. <http://acl.ldc.upenn.edu/P/P94/P94-1012.pdf>

[3] E. Venkataramani and D. Gupta, "English-Hindi Automatic Word Alignment with Scarce Resources". *In International Conference on Asian Language Processing, IEEE*, 2010.

[4] F. Och and H. Ney. "A Systematic Comparison of Various Statistical Alignment Models". *Computational Linguistics*, 29(1):19-52, 2003.

[5] G. Chinnappa and Anil Kumar Singh, "A java Implementation of an Extended Word Alignment Algorithm Based on the IBM Models". In Proceedings of the 3rd Indian International Conference on Artificial Intelligence, Pune, India. 2007.

[6] H. Hammarstrom, "Poor Man's Stemming: Unsupervised Recognition of Same-Stem Words". Chalmers University, 412 96 Gothenburg Sweden, 2007.

[7] H. Langone, Benjamin R. Haskell, Geroge, A. Miller, "Annotating WordNet", *In Proceedings of the Workshop Frontiers in Corpus Annotation at HLT-NAACL*, 2004.

[8] Ittycheriah and S. Roukos, "A Maximum Entropy Word Aligner for Arabic-English Machine Translation". *In Proceedings of HLT-EMNLP*. Vancouver, Canada. Pages 89-96, 2005.

[9] J. Martin, R. Mihalcea, and T. Pedersen, "Word Alignment for Languages with Scarce Resources". *In Proceedings of the ACL Workshop on Building and Using Parallel Texts*. Ann Arbor, USA. Pages 65-74, 2005.

[10] J. Brunning, A. de Gispert and William Byrne, "Context-Dependent Alignment Models for Statistical Machine Translation". *The 2009 Annual Conference of the North American Chapter of the ACL*, pages 110-118, Boulder, Colorado, June 2009.

[11] Li and C. Zong, "Word Reordering Alignment for Combination of Statistical Machine Translation Systems", *IEEE*, 2008.

[12] "Myanmar Grammar", Department of the Myanmar Language Commission, Ministry of Education, Myanmar, 2005.

[13] P. Fung and K. Ward Church "K-vec: A New Approach for Aligning Parallel Texts". *In Proceedings of the 15th conference on Computational linguistics*. Pages 1096-1102. Kyoto, Japan, 1994.

[14] P. Koehn, F. J. Och, and D. Marcu, "Statistical Phrase based Translation". *In Proceedings of HLT-NAACL*. Edmonton, Canada. Pages 81-88, 2003.

[15] P. F. Brown, S. A. Della Pietra, V. J. Della Pietra, and R. L. Mercer "The Mathematics of Statistical Machine Translation: Parameter Estimation". *Computational Linguistics*, 19(2):263-311, 1993.

[16] R. Mihalcea and T. Pedersen, "An evaluation exercise for word alignment". *In Proceedings of HLT-NAACL Workshop on Building and Using Parallel Texts: Data Driven Machine Translation and Beyond*. Edmonton, Canada. Pages 1-6, 2003.

[17] R. Harshawardhan, Mridula Sara Augustine and Dr K. P. Soman "A Simplified Approach to Word Alignment Algorithm for English-Tamil Translation". *In Indian Journal of Computer Science and Engineering*, 2008.